

Front Landscape Packages



ORANA

BY BALCON

Create your dream home that is ideal
in every aspect with our complimentary
front landscape packages.

We have partnered with award winning Fitzgerald Frisby
Landscape Architecture to offer residents five front
landscape packages of distinctive botanical style.

These unique garden designs will be constructed by
LD Total to complement Orana's extensive parks,
wetlands and public spaces, creating a truly integrated,
stunning natural environment.

Our diverse landscape packages will be finished
to perfection with the highest quality design and
construction. Whether you prefer Classic, Native,
Coastal, Japanese or Mediterranean inspired
designs, just follow the simple process outlined
in this brochure to select your package.



PACKAGE 1

Classic Garden

The timeless beauty of formal design is yours with the Classic Garden package. This elegant palette of white with purple hues features evergreen buxus hedging and the perfumed beauty of gardenias and lavenders bordering a central front lawn. Stone steppers lead to the front door and side gate, while a mature feature tree brings seasonal colour and glorious blooms throughout the year.



Disclaimer: Front landscape package excludes driveways, letterboxes and fencing

LAYOUT KEY

- 1 Steppers in mulch
- 2 Turf
- 3 Feature tree
- 4 Shrub planting



Renga Renga Lily
Arthropodium cirratum



Boxwood
Buxus sempervirens



Wild Iris
Dietes grandiflora



Gardenia Florida
Gardenia augusta 'Florida'



English Lavender
Lavandula angustifolia



Lilyturf
Liriope muscari



Creeping Thyme
Thymus serpyllum



Society Garlic
Tulbaghia violacea



Crepe Myrtle
Lagerstroemia indica 'Natchez'



Magnolia
Magnolia grandiflora 'Little Gem'



Ornamental Pear
Pyrus calleryana 'Aristocrat'



Chinese Elm
Ulmus parvifolia



Kangaroo Paw
Anigozanthos flavidus



Emu Bush
Eremophila 'Blue Horizon'



Foxtail Grass
Pennisetum alopecuroides



Native Rosemary
Westringia fruticosa
'Grey Box'



Steppers in gravel



Blue Flax Lily
Dianella caerulea
'Little Jess'



Blue Fescue Grass
Festuca glauca



Flax
Phormium tenax



Wilga
Geijera parviflora

PACKAGE 2

Native Garden

This visually stunning low-maintenance garden showcases a variety of colours, textures and heights. Enjoy Aussie favourites such a vibrant red Kangaroo Paw, the soft blue-grey of Festuca and wispy ornamental grasses. Bluestone steppers meander from the front patio to the side gate in a garden designed to take care of itself.



LAYOUT KEY

- 1 Steppers in gravel
- 2 Feature tree
- 3 Shrub planting



Disclaimer: Front landscape package excludes driveways, letterboxes and fencing

PACKAGE 3

Coastal Garden

Inspired by the nearby coastal setting of Port Phillip Bay, this garden captures the essence of relaxed coastal living with its natural flow, seaside textures and muted silver hues. Massed plantings of Lomandras and perennial tussock grasses with the yellow pop of Desert Flame will provide year-round visual delight. Bluestone steppers traverse the yard from the front patio to the side gate for convenient access.



Disclaimer: Front landscape package excludes driveways, letterboxes and fencing

LAYOUT KEY

- 1 Steppers in gravel
- 2 Turf
- 3 Feature tree
- 4 Shrub planting



Yellow Buttons
Chrysocephalum apiculatum



Pig's Ear
Cotyledon orbiculata



Cushion Bush
Leucophyta brownii



Basket Grass
Lomandra longifolia



Coastal Tussock Grass
Poa poiformis



Blue Chalk Sticks
Senecio mandraliscae



Native Rosemary
Westringia fruticosa



Coast Banksia
Banksia integrifolia



Water Gum
Tristaniopsis laurina



Steppers in gravel



River Wattle
Acacia cognata
'Limelight'



Japanese Aralia
Fatsia japonica



Juniper
Juniperus sabin



Mat Rush
Lomandra longifolia
'Tanika'



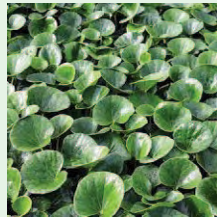
Japanese Maple
Acer palmatum



Tasman Flax-lily
Dianella tasmanica



Hellebore
Helleborus orientalis



Tractor Seat Plant
Ligularia reniformis



Mondo Grass
Ophiopogon japonicus



Japanese Elm
Zelkova serrata 'Schmidtlow'

PACKAGE 4

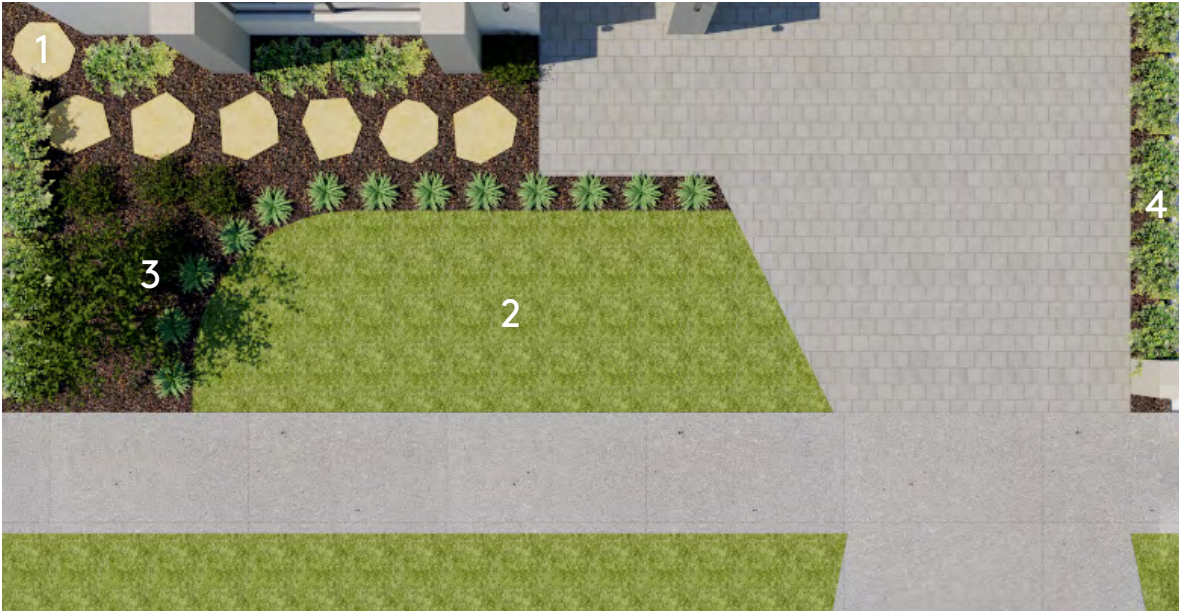
Japanese Garden

Tranquil and serene, this garden features traditional Japanese design and plantings. Rich green cascading acacias nestle in complete harmony with japonicas and the oriental charm of hellebores. The brilliant red foliage of a mature maple tree creates a striking showpiece as bluestone steppers wind through the front yard to the side gate.



LAYOUT KEY

- ① Steppers in mulch
- ② Turf
- ③ Feature tree
- ④ Shrub planting



Disclaimer: Front landscape package excludes driveways, letterboxes and fencing

PACKAGE 5

Mediterranean Garden

Romantic and productive, the Mediterranean garden is a riot of edible herbs, plants and trees that border a central lawn. Harvest your own olives, lemons and herbs, as classic rosemary and thyme blend with the purple hues of long-flowering salvias. Stepping stones weave among the plantings allowing easy access to the front patio and side gate.



Agave
Agave attenuata



Rosemary
Rosmarinus officinalis



Garden Sage
Salvia officinalis



Thyme
Thymus vulgaris



Purple Heart
Tradescantia pallida



Lemon Tree
Citrus limon



Bay Tree
Laurus nobilis



Olive Tree
Olea europaea



LAYOUT KEY

- 1 Steppers in gravel
- 2 Turf
- 3 Feature tree
- 4 Shrub planting
- 5 Steppers in mulch



Steppers in gravel

Disclaimer: Front landscape package excludes driveways, letterboxes and fencing

We've made the delivery of your ideal front landscape design a simple 5-step process.

1



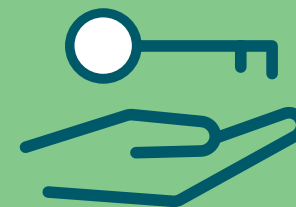
Review your preferred design, our front landscape package is yours at contract signing.



2

Simply email your landscape package choice to Core Projects at orana@coreprojects.com.au within the next 90 days.

3



Contact Core Projects at orana@coreprojects.com.au within 30 days of receiving your Occupancy Permit to receive your Landscape e-Voucher.



Submit your online application by emailing or submitting your online application with your Landscape e-Voucher to LD Total within 60 days

4



5

LD Total will arrange an on-site meeting with you. Your beautiful front garden will be completed soon after.



From major commercial projects to high quality home gardens, their philosophy remains the same - listen and connect with their client's vision, develop long lasting partnerships, and create inspirational outdoor spaces that allow purpose and style to intertwine.



Fitzgerald Frisby Landscape Architecture is a multi award-winning landscape architecture and urban design consultancy based in Melbourne. They work across a broad range of project types and scales, but specialise in the following areas of practice: parks, trail, play, education, streets and civic, coast and ecology, health and aged care.

CORE PROJECTS

Core Projects are property professionals who have a fresh approach in an industry that has been doing things the same way for a long time. They are committed to providing their clients and customers with a service that raises the bar to a new standard, every single time. They are proud to be a culture-driven and certified B Corporation that uses business as a force for good. They care passionately about their clients, their team, what they do and what they stand for.



A family-owned company, Balcon Group originated in Melbourne in 1981 and has successfully delivered a number of commercial, industrial and residential projects. Balcon Group has a proud history of philanthropy and supports organisations including The Florey Institute Motor Neurone Disease Research, Cabrini hospital and is a Foundation Partner of the City of Casey Bunjil Place Community Arts fund.



ORANA

BY BALCON

ORANACLYDENORTH.COM.AU

1800 MY ORANA | 1800 696 726

IMPORTANT: This brochure is a general guide only. All details and depictions in this brochure relating to Orana by Balcon and/or Front Landscape Packages are indicative only and what is actually provided may change depending on a range of variable factors including authority and government approvals, market conditions and project requirements. This includes the availability, quantity, type, size, colour, maturity and configuration of plants and materials to be included as part of a Front Landscape Package. For the avoidance of doubt, only landscaping of a front yard is included in a Front Landscape Package (not a side or rear yard of a lot). Front landscape package excludes driveways, letterboxes and fencing. All images, dimensions, sizes and areas, and other information shown in this brochure are considered correct at the time of publication to the best of Balcon's knowledge, but are preliminary and indicative only and subject to change at Balcon's absolute discretion without notice. The sale of a lot at Orana by Balcon, and any Front Landscape Package, will be subject to the conditions of a contract of sale entered into between the purchaser and the vendor of the lot. The contract of sale is the entire agreement between the vendor and purchaser. All purchasers should rely solely on the terms of the contract of sale and obtain their own independent legal advice in relation to the terms of the contract of sale.